

Titan Lite

FIXED GROUND MOUNT



FEATURES

- Configure to fit most standard PV modules
- Install on concrete or pile foundations
- Hole locators for easy angle set-up
- Heavy duty materials for maximum durability

ADVANTAGES

- Lightweight cost-effective mounting solution
- Selectable pitch angle for maximum production
- Takes less time to install
- Shared rail system is ideal for bifacial modules

The Titan Lite is a fixed ground mount system that used fewer components than a traditional fixed system without sacrificing strength and long-lasting durability. Selectable tilt, bifacial optimization and superior strength make the Titan Lite an ideal solution for any project.



MADE FOR CANADA



TITAN LITE—FIXED GROUND MOUNT

Bifacial Optimized

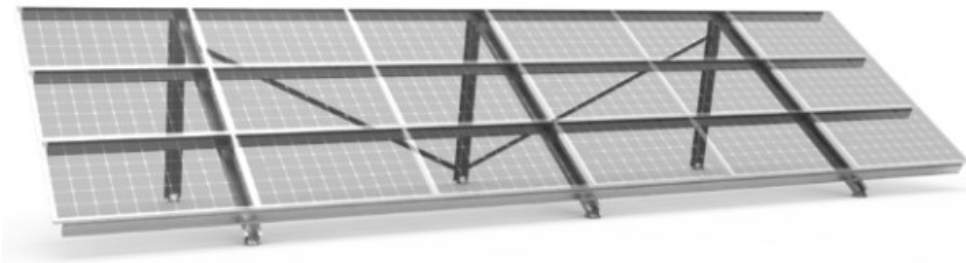
The shared rail system minimizes back-side shading of the PV modules compared to traditional racking. This provides maximum performance from bifacial modules.

Angle Selection

The Titan Lite can be installed at angles ranging from 35° to 55° by using the pre-set mounting points.

Back-Bolts

The shared rail system allows back-bolting of the modules. No more climbing on top of arrays to install traditional top clamps.



Durable: Every component has been tested to ensure quality, even in Canada's most extreme environments



Bankable: Fast installations and low cost solutions keep your projects on track.



Protected: The Titan Lite is covered by our 10-year warranty.

Specifications	Titan Lite 2L	Titan Lite 3L
Configuration	6-12 x 60 Cell Modules 6-9 x 72 Cell Modules	12-18 x 60 Cell Modules 9-15 x 72 Cell Modules
Module Mounting	Back Bolted	
Selectable Tilt Range	35 to 55	
Tilt Mechanism	Initially set / fixed	
Base Compatibility	Pier Base / Pad Base / Piles	
Material	Galvanized steel and aluminum	
Bonding	Integrated	

Design and specifications are subject to change without notice. Contact Fast-Rack to find a dealer near you.