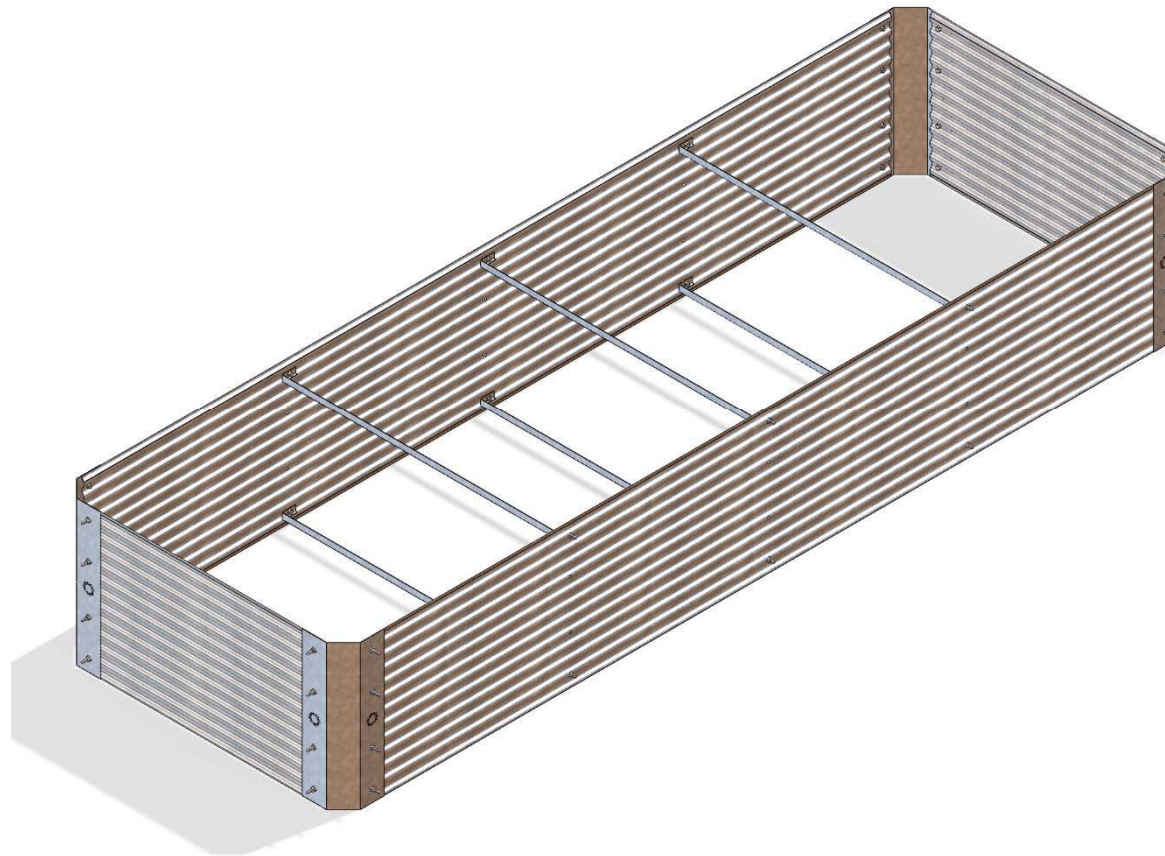


# ***PRU CONCRETE TUB INSTALLATION MANUAL***

---



# Table of Contents

- Table of Contents..... 2
- 1. Safety ..... 3
  - a- Basic Safety Considerations ..... 3
  - b- Warnings and Symbols ..... 3
  - c- Responsibilities of the Installer..... 3
  - d- Responsibilities of the Operator ..... 3
- 2. Tools and Hardware ..... 4
  - a-Tools.....4
  - b-Hardware .....4
- 3. Overview of Components .....4
- 4. Installation Instruction .....5

# 1. Safety




## a- Basic Safety Considerations

The following basic safety instructions and the warning notes are an essential part of this manual and are of fundamental importance for handling the product.

## b- Warnings and Symbols

Throughout this manual you will notice several warning notes which consist of:

- Warning Symbols
- Indicator Word to show the danger Level
- Information regarding the source and type of the danger
- Measures to avoid the hazard prevent injuries or property damages

	Denotes a potential hazard which may lead to physical injury and/or property damage
	Denotes hand tighten fasteners
	Denotes that fasteners torque per specifications is required

## c- Responsibilities of the Installer

Every person installing this system must read and fully understand every section of this manual prior to working on the system. This installation manual should be read in conjunction with the provided Issued for Construction (IFC) drawings for your specific project. Proper Personal Protective Equipment (PPE) must be worn at all times, while performing installation or maintenance.

It is the responsibility of the installer to ensure all applicable safety measures are adhered to while installing this system. Any modifications to the system or parts are to be performed only by authorized personnel and must be approved by Polar Racking Inc. (Polar Racking) prior to implementation. The installer must have adequate experience with all materials and tools used to install this system. Furthermore, the installer must be able to recognize any possible danger, whether it is stated in this manual or not. It is recommended that a site-specific hazard assessment is completed in advance of any construction work. Installer must inform Polar Racking with any installation issues immediately. Any consequences due to incorrect installation is the responsibility of the installer.

Due to the inherent properties of mating steel components, please ensure the limiting speed of cordless drivers (RPM) is set to the lowest torque setting (vs. drill setting), for all fasteners to prevent over torqueing. All fasteners provided by Polar Racking have been pre-treated to prevent material Galling (or cold welding), however, this is highly dependent upon the speed at which they are fastened.

## d- Responsibilities of the Operator

It is the responsibility of the operator to ensure all scheduled maintenance is performed on time. The operator must ensure that the installation of the system is performed only by qualified personnel with adequate skill and knowledge. The operator must ensure a copy of this manual is available to any installer and/or maintenance person. A replacement manual may be obtained by contacting Polar Racking using the contact information provided at the back of this manual.

## 2. Tools and Hardware

### a- Tools

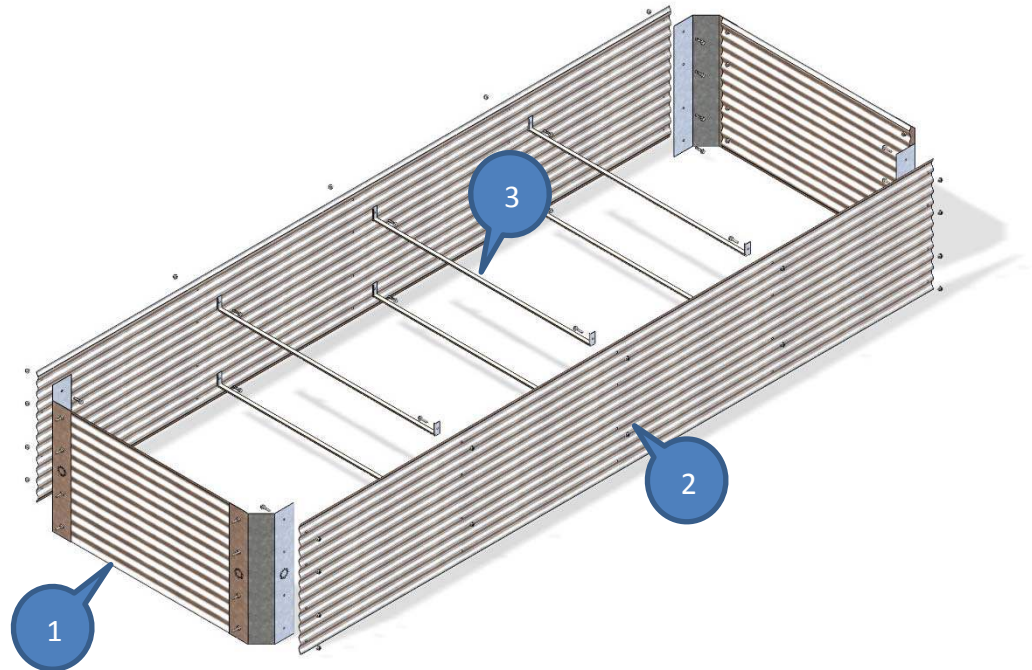
1. Adjustable Electric Impact Gun or Power Drill with Adjustable Clutch
2. 13 mm Hex Socket
3. 6 mm Hex Key Allen Wrench

### b- Hardware

1. Socket Head Cap Screw, M8-1.25 x 20 mm, 18-8 SS
2. Serrated Hex Flange Nut w/ Nylon Insert, M8-1.25, 18-8 SS, Gleitmo Coated

## 3. Overview of Components

1. Short Side Assembly (Contains Short Side Panel, Corner Bracket, and M8 Hardware)
2. Long Side Panel
3. Cross Brace



## 4. Installation Instructions

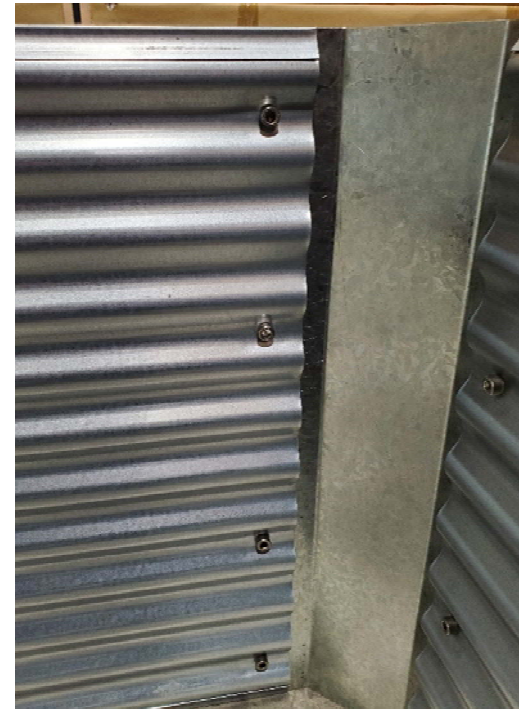
Note: Refer to Polar Racking IFC drawings for Concrete Tub dimensions and part details. Make sure appropriate parts are used to assemble the Concrete Tub for projects with multiple sizes of tubs.

**Step 1(a)**-Take **(2) Short Side Assemblies** and place them on the ground upright and opposite of each other, separated by the length of the Tub Assembly.

**Step 1(b)**- Starting with one half of the Tub Assembly as in **Fig. 1**, take **(1) Long Side Panel** and place it between the **(2) Short Side Assemblies** so that it touches the **inside face** of both **Corner Brackets**. Make sure the **flattened hems** on the **Long Side Panel** are facing inward toward the center of the Tub Assembly as shown on **Fig.2**. Align the 4 holes located on each **Corner Bracket** with the 4 holes located on both sides of the **Long Side Panel**. Install **(8) M8 Socket Head Cap Screws** on the **inside face** of the **Long Side Panel** and **(8) M8 Locknuts** on the **outside face** of the **Corner Brackets**. Tighten all hardware by hand.



**Fig. 1 –Tub Assembly with one Long Side Panel Installed**



**Fig. 2 – Long Side Panel attached with flattened hem facing inward**

Step 1(c)- After all hardware has been *hand tightened*, use a **6 mm Allen Key** to hold the **M8 Socket Head Cap Screws** and an **Impact Gun w/ 13 mm Socket** to torque the **M8 Locknuts** until they stop rotating (**Recommended Torque – 25 ± 1 ft.lb**).

Step 1(d)- Repeat **Steps 1(b)** and **1(c)** to assemble the remaining half of the Tub Assembly as in **Fig. 3**.



**Fig. 3 – Tub Assembly with both Long Side Panels Installed**

**Step 2(a)**- Grab **(6) Cross Braces**, **(12) M8 Socket Head Cap Screws** and **(12) M8 Locknuts**. As noted in Fig. 4 and Fig. 6, all **Cross Braces** are to be positioned at the **3 topmost and 3 bottommost holes** on the **Long Side Panels** of the Tub Assembly. Make sure the **Cross Braces** are aligned and installed as per Fig. 5, where the **M8 Socket Head Cap Screw** is on the **inside face** of the Tub Assembly. Install each **Cross Brace** one by one and **hand tighten** all hardware.

**Step 2(b)**- After all hardware has been **hand tightened**, use a **6 mm Allen Key** to hold the **M8 Socket Head Cap Screws** and an **Impact Gun w/ 13mm Socket** to torque the **M8 Locknuts** until they stop rotating (**Recommended Torque – 25 ± 1 ft.lb**).



**Fig 4. – Holes on the Long Side Panels to be used for Cross Brace Installation**



**Fig 5. – Cross Brace installed on the inside face of the Long Side Panel**



**Fig 6. – Finished Tub**