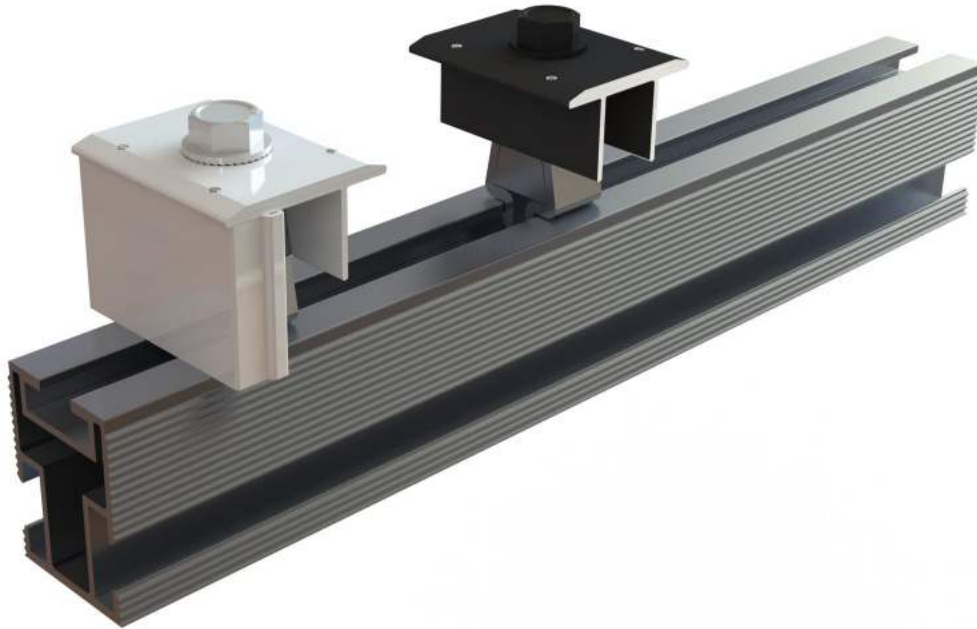


Click-Lock

Module Clamp



FEATURES

- Click-Lock mechanism
- Universal module fitment
- Integrated bonding
- Black & silver options

ADVANTAGES

- Click in place installation
- Common for mid and end clamping
- Low profile with great aesthetics
- Compatible with Fast-Rack UL, HD and RM rails

The Fast-Rack Click Lock Clamp integrates seamlessly with the Fast-Rack Ultra, HD and RM rail systems. The Click Lock Clamp fastens to the top channel of the rail with an affirmative clicking action. It can be installed anywhere along the rail, and is available in black and silver to match your preferred modules. The non-protruding bolt provides superior aesthetics and snap-in function ensures proper installation every time.



MADE FOR CANADA



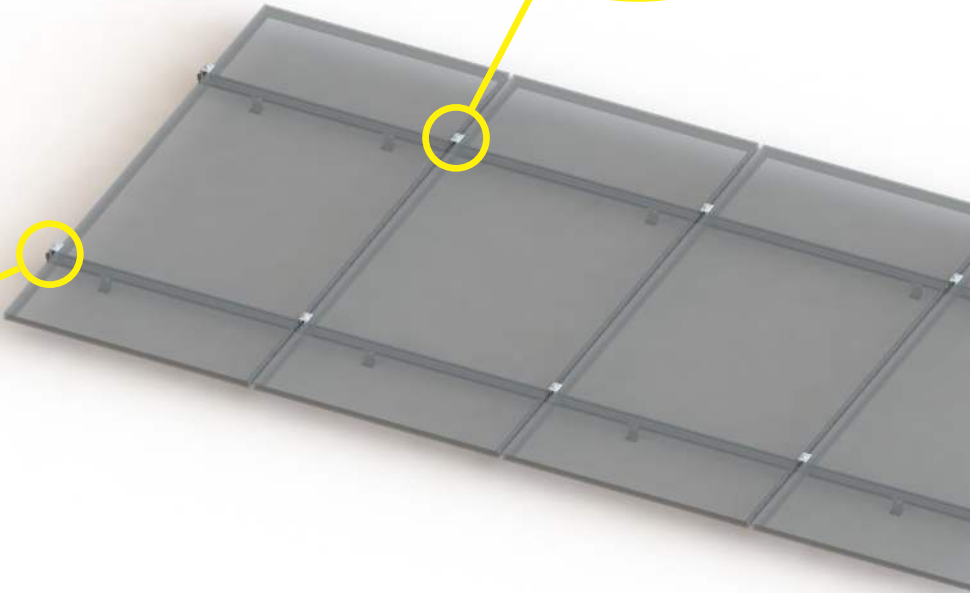
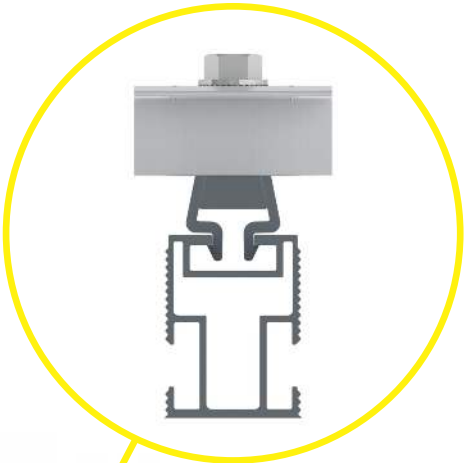
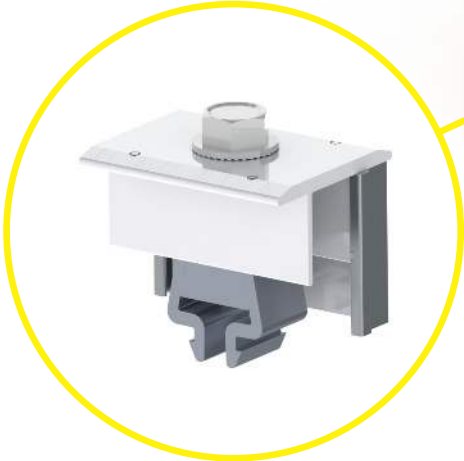
Click-Lock — Module Clamp

☒ Click Action

The Click Lock Clamp snaps into the top channel of the Fast-Rack rail. As the bolt is tightened, the clip spreads providing a tight connection to the rail.

☒ End Clamp Stopper

Click Lock mid clamps are converted to an end clamp with the addition of a stopper. Simply slide the stopper into place. Sizes available for all common module frames.



Durable: Every component has been tested to ensure quality, even in Canada's most extreme environments



Bankable: Fast installations and low cost solutions keep your projects on track.



Protected: Fast-Rack is covered by our 10 or 25-year warranty.

Specifications	
Options	Silver and Black
Attachment	Single M8 Bolt
Configuration	Mid and End
Bonding	Integrated

Materials	Aluminum, Stainless Steel
-----------	---------------------------

Design and specifications are subject to change without notice. Contact Fast-Rack to find a dealer near you.