

# Enphase Energy System

# Component list



## Enphase microinverters and monitoring



### IQ8M-72-M-US

Enphase IQ8M Microinverter, 330 VA peak power, MC4 connector. Compatible with grid voltage 240 V, split-phase (L-L).



### IQ8H-208-72-M-US

Enphase IQ8H-208 Microinverter, 366 VA peak power, MC4 connector. Compatible with grid voltage 208 V, single-phase (L-L).



### IQ8H-240-60-M-US

Enphase IQ8H Microinverter, 384 VA peak power, MC4 connector. Compatible with grid voltage 240 V, split-phase (L-L).



### ENV-IQ-AM1-240

Enphase IQ Gateway, single-phase, metered. Revenue-grade accuracy (ANSI C12.20 +/- 0.5%) with calibrated solid-core CT.



### IQ8HC-72-M-US

Enphase IQ8HC Microinverter, 384 VA peak power, MC4 connector. Compatible with grid voltage 240 V, split-phase (L-L) and 208 V, single-phase (L-L).



### ENV2-IQ-AM1-240

Enphase IQ Gateway single-phase metered. IEEE 1547:2018 compliant. Revenue-grade accuracy (ANSI C12.20 +/- 0.5%) with calibrated solid-core CT.



### IQ8X-80-M-US

Enphase IQ8X Microinverter, 384 VA peak power, MC4 connector. Compatible with grid voltage 240 V, split-phase (L-L) and 208 V, single-phase (L-L).



### CT-200-SPLIT

Split-core Current Transformer (CT), accuracy +/- 2.5%. For use with IQ Gateway and IQ Combiner.



### IQ8PLUS-72-M-US

Enphase IQ8+ Microinverter, 300 VA peak power, MC4 connector. Compatible with grid voltage 240 V, split-phase (L-L).



### CT-200-CLAMP

Split-core Current Transformer (CT) accuracy +/- 2.5%. For use with IQ Gateway and IQ Combiner.



### IQ8A-72-M-US

Enphase IQ8A Microinverter, 366 VA peak power, MC4 connector. Compatible with grid voltage 240 V, split-phase (L-L).



### EPLC-01

Enphase Power Line Carrier (Quantity 2).

**X2-IQ-AM1-240-4C**

AC IQ Combiner with IQ Gateway PCBA, 80 A, 240 V split-phase, with CELLMODEM-M1-06-SP-05, silver solar shield and includes 2xCT-200-SPLIT, supports Hold-down Kits for IQ8 Microinverters.

**X-IQ-AM1-240-5**

AC IQ Combiner with IQ Gateway PCBA, Communications Kit 2 PCBA, 80 A, 240 V, split-phase with silver solar shield and includes 2xCT-200-CLAMP, supports Hold-down Kits for IQ8 Microinverters.

**CELLMODEM-M1-06-AT-05**

Enphase Mobile Connect. LTE CAT M1 cellular modem with 5-year AT&T data plan for Mexico. For systems up to 60 microinverters.

**X-IQ-AM1-240-5C**

AC IQ Combiner with IQ Gateway PCBA, Communication Kit 2 PCBA, 80 A, 240 V, split-phase with CELLMODEM-M1-06-SP-05 silver solar shield and includes 2xCT-200-CLAMP, supports Hold-down Kits for IQ8 Microinverters.

**COMMS-KIT-01**

USB adapter kit for IQ Gateway/ IQ Combiner. Enables wireless communication with IQ Battery and IQ System Controller.

**X-IQ-AM1-240-5-HDK**

AC IQ Combiner with IQ Gateway PCBA, Communications Kit 2 PCBA, 80 A, 240 V, split-phase with silver solar shield and includes 2xCT-200-CLAMP. Pre-installed Hold-down Kit 2 for IQ8 Microinverters.

**ENV-IQ-AM3-3P**

IQ Commercial Gateway with 3 solid-core CTs. Compatible with IQ Microinverters in three-phase configurations: 208 V or 220 V 3-wire, and 240 V 4-wire.

**X-IQ-AM1-240-5C-HDK**

AC IQ Combiner Box with IQ Gateway PCBA, Communication Kit 2 PCBA, 80 A, 240 V, split-phase with CELLMODEM-M1-06-SP-05 silver solar shield and includes 2xCT-200-CLAMP. Pre-installed Hold-down Kit 2 for IQ8 Microinverters.

**X2-IQ-AM1-240-4C**

AC IQ Combiner with IQ Gateway PCBA, 80 A, 240 V split-phase with silver solar shield and includes 2x T-200-SPLIT, supports Hold-down Kits for IQ8 Microinverters.

**CELLMODEM-M1-06-SP-05**

Enphase Mobile Connect. LTE CAT M1 cellular modem with 5-year T-Mobile data plan for US, Puerto Rico, US Virgin Islands, and Canada. For systems up to 60 microinverters.

**CELLMODEM-C1-01-TM-05**

IQ Commercial Cell Modem Kit with LTE CAT 1 cellular modem with 5-year data plan from T Mobile sim for the U.S., Puerto Rico, U.S. Virgin Islands, Canada. Supports 60 to 276 microinverters per system.

**IQ8P-3P-72-E-US**

Enphase IQ8P Microinverter, compatible with 72-cell PV modules, 4-pin EN4 bulkhead connector for the U.S.

**ENV2-IQC2-AM3-3P**

IQ Gateway Commercial 2, three-phase meter, IEEE 1547:2018. Compatible with IQ8P Microinverters with L1-N 110 kHz PLC in three-phase meter configurations, NA 120/208 V, 60 Hz, 4-wire, metering with 200 A/400 A (production 0.5%), 600 A (consumption 2.5%) CT support.

# Accessories for IQ Combiner 3-ES and IQ Combiner 4

## BRK-10A-2-240

Circuit breaker, 2-pole, 10 A, Eaton BR210.

## BRK-10A-2-240V

Circuit breaker, 2-pole, 10 A, Eaton BR210.

## BRK-15A-2P-240V-B

Circuit breaker, 2-pole, 15 A, Eaton BR215B with Hold-down Kit support.

## XA-SOLARSHIELD-ES

Replacement solar shield for IQ Combiner 4C/4.

## XA-PLUG-120-3

Accessory Receptacle for power line carrier in IQ Combiner 4C/4 (required for EPLC-01).

## Enphase Communications Kit (COMMS-CELLMODEM-M1-06)

Includes COMMS-KIT-01 and CELLMODEM-M1-06-SP-05 with 5-year data plan for Enphase Energy System sites.

## BRK-20A-2P-240

Circuit breaker, 2-pole, 20 A, Eaton BR220.

## BRK-15A-2-240V

Circuit breaker, 2-pole, 15 A, Eaton BR215.

## BRK-20A-2P-240V-B

Circuit breaker, 2-pole, 20 A, Eaton BR220B with Hold-down Kit support.

## BRK-15A-2-240

Circuit breaker, 2-pole, 15 A, Eaton BR215.

## BRK-20A-2P-240V

Circuit breaker, 2-pole, 20 A, Eaton BR220.

## XA-ENV-PCBA-4

Replacement IQ Gateway PCB for IQ Combiner 4C/4.

## EPLC-01

Power line carrier (communication bridge pair), quantity - one pair.

## X-IQ-NA-HD-125A

Hold-down Kit for Eaton circuit breaker with screws.

## X-IQ-NA-HD-125A-2

Hold-down Kit 2 for circuit breakers.

## XA-ENV-PCBA-3

IQ Gateway PCB. For replacement only.

## XA-ENV2-PCBA-5

Replacement IQ Gateway printed circuit board (PCB) for IQ Combiner 5/5C.

## XA-COMMS2-PCBA-5

COMMS KIT-2 PCBA for IQ Combiner 5/5C. For replacement only.

# Enphase cables and accessories



## Q-12-10-240

IQ Cable for 60/72 cell 1.0 m portrait module pitch. Connector pitch is 1.3 m. 240 male connectors plus 2 bonus link connectors.



## Q-12-17-240

IQ Cable for 60 cell 1.7 m landscape module pitch. Connector pitch is 2.0 m. 240 male connectors plus 2 bonus link connectors.



## Q-12-20-200

IQ Cable for 72 cell 2.0m landscape module pitch. Connector pitch is 2.3 m. 200 male connectors plus 2 bonus link connectors.



## Q-12-RAW-300

IQ Cable, 12 AWG, no connectors, 300 m (984 ft).



## Q-TERM-10

IQ Terminator Cap for IQ Cable ends. Center feed requires 2 per branch. Pack of 10.

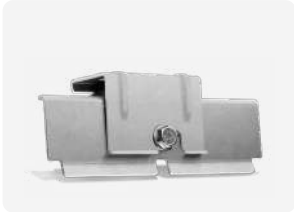


## Q-SEAL-10

Female IQ Sealing Cap for unused IQ Cable connectors. Pack of 10.

**Q-BA-CAP-10**

Male IQ Sealing Cap for branch aggregator and microinverter AC bulkhead. Pack of 10.

**EFM-35MM / EFM-40MM**

Enphase IQ Microinverter Frame Mount Bracket compatible with PV module frame thickness of 35 mm/ 40 mm.

**Q-CONN-10F**

Female IQ Field Wireable Connector for IQ Cable. Pack of 10 connector bodies with 25 female MC4 tool crimpable pins.

**Q-DISC-10**

IQ Disconnect Tool for IQ Cable connectors, MC and Amphenol DC connectors, and AC module mount. Pack of 10.

**Q-DCC-2**

IQ Microinverter replacement adaptor for multi-contact MC4 DC connector

**QD-12-25-108**

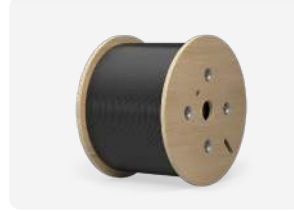
QD Cable (4x12AWG) for 60-72 cell, 2.0 m–2.5 m module pitch. Connector pitch is 2.9 m. 108 male connectors with PC connector fitted to cable ends. 17 additional center taps spaced every 6 connectors. Center tap connectors spaced at half-pitch.

**QD-12-20-120**

QD Cable (4x12AWG) for 60-72 cell, 2.0 m max. module pitch. Connector pitch is 2.4 m. 120 male connectors with PxC connector fitted to cable ends. 19 additional center taps spaced every 6 connectors. Center tap connectors spaced at half-pitch.

**QD-12-13-120**

QD Cable (4x12 AWG) for 60-72 cell, 1.3 m max. module pitch. Connector pitch is 1.7 m. 120 male connectors with PxC connector fitted to cable ends 19 additional centre taps spaced every 6 connectors. Centre tap connectors spaced at half-pitch.

**QD-12-RAW-300**

QD Cable, 12 AWG, no connectors, 300 m.

**ET-CLIP-100**

IQ Cable Clip. Pack of 100.

**ECA-EN4-FW-10-12**

TE PV4-S to non-terminated. Set of 12 male/female connectors and 1000 mm of DC cable.

**ECA-EN4-S22-10-12**

TE PV4-S to MC4. Set of 12 male and female adapters with 1000 mm DC cable between.

**ECA-EN4-S22-12**

TE PV4-S to MC4. Set of 12 male and 12 female adapters with 57 mm DC cable between.

**QD-CONN-10F**

Field Wireable QD Connector for NA three-phase QD Cable. Pack of 10.

**QD-CONN-10M**

Field Wireable QD Connector for NA three-phase QD Cable. Pack of 10.

**Q-CLIP-100**

IQ Cable rail mount cable management clip. Pack of 100.

**QD-DISC-10**

QD Disconnect Tool for QD Cable (works for IQ Cable and three-phase IQ Cabling as well). Pack of 10.

**QD-LCF-400-3P**

PLC Line Filter, 400 A, three-phase.

**QD-LINKFW-10**

Centre tap adaptor cable for QD Cabling. Length between connectors 300 mm. Pack of 10.

**QD-SEAL-10**

QD Cable three-phase connector sealing cap. Pack of 10.

**QD-TERM-10**

Terminator cap for QD Cable. Pack of 10.

**Q-CONN-10M**

Male IQ Field Wireable Connector for IQ Cable. Pack of 10 connector bodies with 25 male MC4 tool crimpable pins.

## Enphase storage and storage accessories

**ENCHARGE-1P-NA**

Enphase IQ Battery 3 kit with one 1.28 kVA, 3.36 kWh, single-phase battery unit (with 4 integrated IQ8X-BAT Microinverters and backup feature) and cover kit.

**ENCHARGE-10-1P-NA**

Enphase IQ Battery 10 kit with three 1.28 kVA, 3.36 kWh, single-phase battery units (with 12 integrated IQ8X-BAT Microinverters and backup feature) and cover kit.

**ENCHARGE-3T-1P-NA**

Enphase IQ Battery 3T base kit with one 1.28 kVA, 3.36 kWh, single-phase battery unit (with 4 integrated IQ8X-BAT Microinverters and backup feature) and cover kit.

**ENCHARGE-10T-1P-NA**

Enphase IQ Battery 10T base kit with three 1.28 kVA, 3.36 kWh, single-phase battery units (with 12 integrated IQ8X-BAT Microinverters and backup feature) and cover kit.

**IQBATTERY-5P-1P-NA**

IQ Battery 5P kit assembly for shipment to customers. Includes one IQ Battery 5P and one cover kit.

**EP200G101-M240US00**

Enphase IQ System Controller with 200 A capacity, neutral-forming transformer providing microgrid interconnect device (MID) functionality.

**EP200G-SC2-RSD-KIT**

Enphase IQ System Controller 2 with 200 A capacity, neutral-forming transformer providing microgrid interconnect device (MID) functionality.

**SC200D111C240US01/SC200G111C240US01**

Enphase IQ System Controller 3/3G with 200 A capacity, neutral-forming transformer providing microgrid interconnect device (MID) functionality.

**COMMS-KIT-01**

USB adapter kit for IQ Gateway/IQ Combiner. Enables wireless communication with IQ Battery and IQ System Controller.

**COMMS-KIT-02**

Communications Kit 2 with Digi BLE module in a NEMA 3R enclosure to enable connectivity between standalone IQ Gateways and IQ Battery 5P.

**COMMS-CELLMODEM-M1**

USB adapter kit for IQ Gateway/IQ Combiner along with CELLMODEM-M1 (LTE CAT M1 cellular modem, which includes a 5-year data plan for Enphase Energy Systems with up to 60 microinverters, 12 IQ Battery 3, and 1 IQ System Controller).

**B05-PI-0550-O**

IQ Battery 5P Pedestal Mount for NA region. Includes one pedestal for IQ Battery 5P.

**EP200G-HNDL-R1**

The IQ System Controller Handles (including both left and right handles) are used for easier and proper mounting of IQ System Controller on the wall. The handles can be reused on different installation sites by the installation crew.

**ENCHARGE-HNDL-R1**

One set of IQ Battery Lifting Handle (pair of 1 front and 1 side handle).

**IQBATTERY-HNDL-5**

IQ Battery 5P Lifting Handles. Includes one left-side and one right-side lifting handle for IQ Battery 5P.

**B03-CX-0350-O**

Enphase IQ Battery 3 cover only.

**B03-C-0350-O**

Enphase IQ Battery 3 cover kit with cover, mounting bracket, and screws.

**B10-C-1050-O**

Enphase IQ Battery 10 Cover Kit with cover mounting bracket screws, two raceway joiners, set of wires for daisy chaining the three battery units.

**B05-CX-0550-O**

IQ Battery 5P Replacement Cover. Includes one ID cover for IQ Battery 5P.

**B10-CX-1050-O**

Enphase IQ Battery 10 cover only.

**B03T-C-0430-O**

Enphase IQ Battery 3T cover kit with cover, mounting bracket, and screws.

**B10T-MWM-1280-O**

IQ Battery 10T Middle Wall Mount for UL 9540A compliant products.

**B10T-AWM-1280-O**

IQ Battery 10T additional top and bottom wall mounts for UL 9540A compliant products.

**B10T-CX-1290-O**

Enphase IQ Battery 10T cover only.

**B03T-CX-0430-O**

Enphase IQ Battery 3T cover only.

**B10T-C-1290-O**

Enphase IQ Battery 10T cover kit with cover mounting bracket, set of wires for daisy chaining the three battery units.

## Breakers for IQ System Controller

**BRK-200A-2P-240V**

Main Breaker, 2-pole, 200 A, 25 kAIC, CSR2200N for IQ System Controller.

**BRK-175A-2P-240V**

Main Breaker, 2-pole, 175 A, 25 kAIC, CSR2175N for IQ System Controller.

**BRK-150A-2P-240V**

Main Breaker, 2-pole, 150 A, 25 kAIC, CSR2150N for IQ System Controller.

**BRK-125A-2P-240V**

Main Breaker, 2-pole, 125 A, 25 kAIC, CSR2125N for IQ System Controller.

**BRK-100A-2P-240V**

Main Breaker, 2-pole, 100 A, 25 kAIC, CSR2100 for IQ System Controller.

**BRK-80A-2P-240V**

Circuit Breaker, 2-pole, 80 A, 10 kAIC, BR280 for IQ System Controller.

**BRK-60A-2P-240V**

Circuit Breaker, 2-pole, 60 A, 10 kAIC, BR260 for IQ System Controller.

**BRK-40A-2P-240V**

Circuit Breaker, 2-pole, 40 A, 10 kAIC, BR240B for IQ System Controller.

**BRK-30A-2P-240V**

Circuit Breaker, 2-pole, 30 A, 10 kAIC, BR230B for IQ System Controller.

**BRK-20A-2P-240V-B**

Circuit Breaker, 2-pole, 20 A, 10 kAIC, BR220B for IQ System Controller.

# Revision history

Revision	Date	Description
MKT-00843-1.0	July 2024	Initial release.
Previous releases.		

For more information, visit [www.enphase.com](http://www.enphase.com) or call **(877) 797-4743**

MKT-00843-1.0-2024-07-01  
© 2024 Enphase Energy. All rights reserved.